

# **LTE Windows USB Driver Installation Guide**

## **LTE Module Series**

Rev. LTE\_Windows\_USB\_Driver\_Installation\_Guide\_V2.0

Date: 2018-12-24

Status: Released



**Our aim is to provide customers with timely and comprehensive service. For any assistance, please contact our company headquarters:**

**Quectel Wireless Solutions Co., Ltd.**

7<sup>th</sup> Floor, Hongye Building, No.1801 Hongmei Road, Xuhui District, Shanghai 200233, China

Tel: +86 21 5108 6236

Email: [info@quectel.com](mailto:info@quectel.com)

**Or our local office. For more information, please visit:**

<http://www.quectel.com/support/sales.htm>

**For technical support, or to report documentation errors, please visit:**

<http://www.quectel.com/support/technical.htm>

Or email to: [support@quectel.com](mailto:support@quectel.com)

## **GENERAL NOTES**

QUECTEL OFFERS THE INFORMATION AS A SERVICE TO ITS CUSTOMERS. THE INFORMATION PROVIDED IS BASED UPON CUSTOMERS' REQUIREMENTS. QUECTEL MAKES EVERY EFFORT TO ENSURE THE QUALITY OF THE INFORMATION IT MAKES AVAILABLE. QUECTEL DOES NOT MAKE ANY WARRANTY AS TO THE INFORMATION CONTAINED HEREIN, AND DOES NOT ACCEPT ANY LIABILITY FOR ANY INJURY, LOSS OR DAMAGE OF ANY KIND INCURRED BY USE OF OR RELIANCE UPON THE INFORMATION. ALL INFORMATION SUPPLIED HEREIN IS SUBJECT TO CHANGE WITHOUT PRIOR NOTICE.

## **COPYRIGHT**

THE INFORMATION CONTAINED HERE IS PROPRIETARY TECHNICAL INFORMATION OF QUECTEL WIRELESS SOLUTIONS CO., LTD. TRANSMITTING, REPRODUCTION, DISSEMINATION AND EDITING OF THIS DOCUMENT AS WELL AS UTILIZATION OF THE CONTENT ARE FORBIDDEN WITHOUT PERMISSION. OFFENDERS WILL BE HELD LIABLE FOR PAYMENT OF DAMAGES. ALL RIGHTS ARE RESERVED IN THE EVENT OF A PATENT GRANT OR REGISTRATION OF A UTILITY MODEL OR DESIGN.

***Copyright © Quectel Wireless Solutions Co., Ltd. 2018. All rights reserved.***

# About the Document

## History

Revision	Date	Author	Description
1.0	2017-11-14	Hunter LV/ Joy WANG	Initial
2.0	2018-12-24	Isaac WANG	<ol style="list-style-type: none"><li>1. Added the applicable modules EM06, EM12, EG12 of this document.</li><li>2. Modified some screenshots of driver installation. (Figure 1, 4, 7, 9, 10, 16)</li></ol>

## Contents

About the Document .....	2
Contents .....	3
Figure Index .....	4
<b>1 Introduction .....</b>	<b>5</b>
1.1. Applicable Products.....	5
<b>2 Installation of USB Driver.....</b>	<b>6</b>
2.1. Preparation .....	6
2.2. Installation Procedures.....	7
2.3. Test .....	11
<b>3 Uninstallation of USB Driver .....</b>	<b>12</b>
3.1. Uninstallation Procedures .....	12

## Figure Index

FIGURE 1: "DEVICE MANAGER" INTERFACE OF WINDOWS SYSTEM WITHOUT QUECTEL DRIVERS ...	6
FIGURE 2: CHECK INSTALLATION SETTING.....	7
FIGURE 3: CHOOSE DESTINATION LOCATION .....	8
FIGURE 4: COPYING FILES .....	8
FIGURE 5: AUTOMATIC INSTALLATION .....	9
FIGURE 6: COMPLETE INSTALLATION .....	10
FIGURE 7: CHECK USB DRIVER INSTALLATION RESULT .....	10
FIGURE 8: MODULE TESTING VIA QNAVIGATOR (TAKE BG96 AS AN EXAMPLE) .....	11
FIGURE 9: CHOOSE THE INSTALLED USB DRIVER.....	12
FIGURE 10: UNINSTALL THE USB DRIVER .....	13
FIGURE 11: CHECK UNINSTALLATION SETTING.....	13
FIGURE 12: CONFIRM UNINSTALLATION .....	14
FIGURE 13: AUTOMATIC UNINSTALLATION .....	14
FIGURE 14: REMOVING FILES .....	15
FIGURE 15: COMPLETE UNINSTALLATION.....	15
FIGURE 16: CHECK USB DRIVER UNINSTALLATION RESULT .....	16

# 1 Introduction

This document illustrates how to install USB driver for Quectel LTE modules on Windows operating systems, with provided installation package.

The installation package (*Quectel\_LTE\_Windows\_USB\_Driver*) supports Windows 7, Windows 8 and Windows 10 operating systems. This document introduces the installation procedure on Windows 7 system as an example.

## 1.1. Applicable Products

The document is applicable to the following Quectel LTE modules.

**Table 1: Applicable Modules**

Applicable Modules	Description
EC2x	EC25, EC21, RC20 R2.0, EC20 R2.1
Ex06	EP06, EG06, EM06
Ex12	EM12, EG12
EGxx	EG95, EG91
Others	AG35, BG96

## 2 Installation of USB Driver

This chapter mainly describes how to install USB driver for Quectel LTE modules with the provided installation package.

### 2.1. Preparation

Before USB driver installation, please connect the module to PC via USB cable first and then press power key to power up the module. If you have never installed any Quectel driver on your system before, there would be a prompt about new device which indicates you to update the drivers. Please ignore the prompt and go to the next step.

The figure below shows the “Computer Management” → “Device Manager” interface of Windows system that has never installed Quectel drivers.

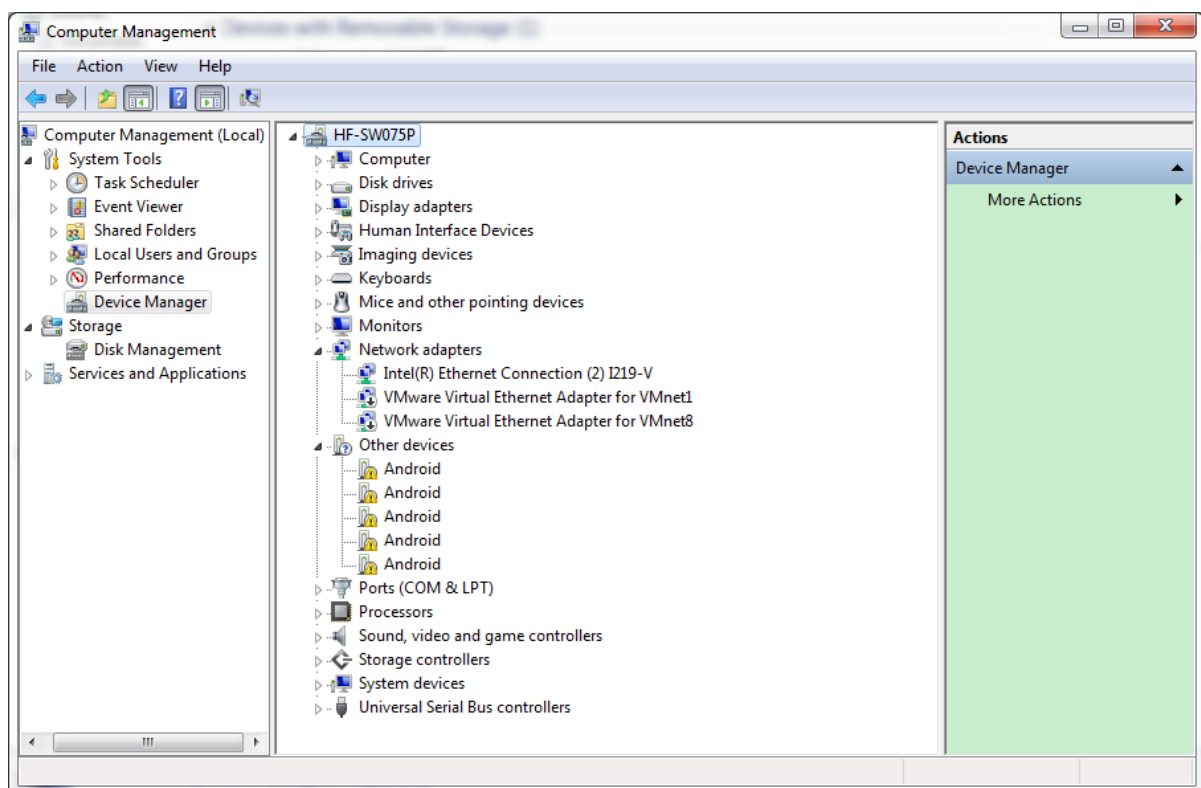


Figure 1: “Device Manager” Interface of Windows System without Quectel Drivers

**NOTE**

For Windows XP system, you MUST ensure the module has been connected to PC before USB driver installation.

## 2.2. Installation Procedures

Before USB driver installation, please get the latest installation package from Quectel. This document takes the installation of *Quectel\_LTE\_Windows\_USB\_Driver\_V2.0* as an example, and the details are shown as below.

### 1. Check Installation Setting

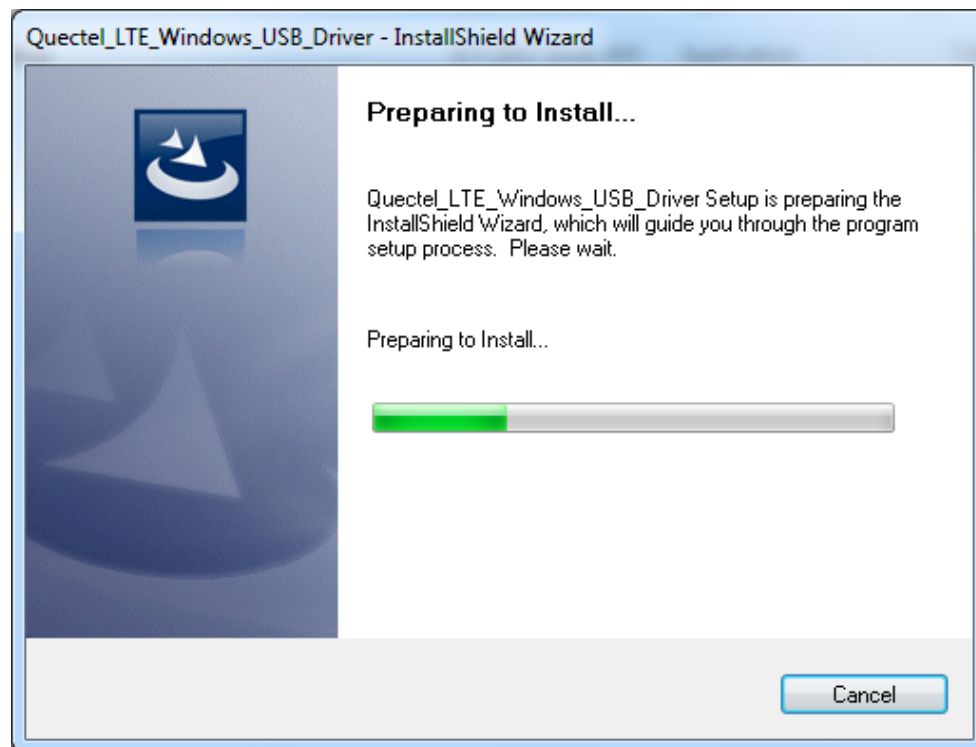


Figure 2: Check Installation Setting

### 2. Choose Destination Location

If you do not want to change the default location for USB driver installation, please click **“Next”** directly to go on.



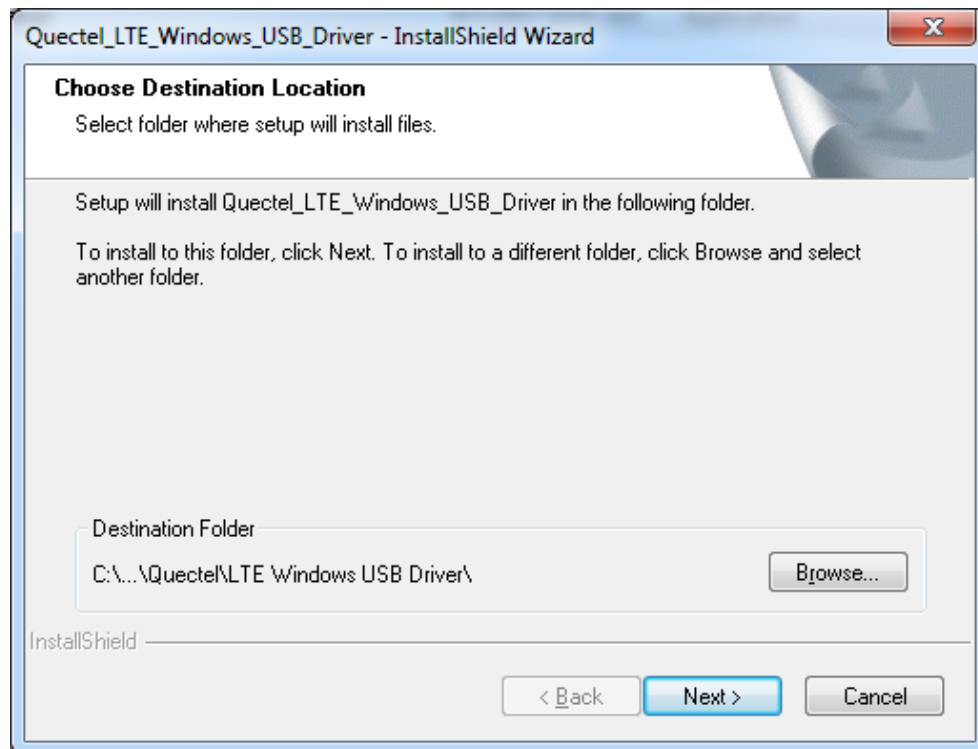


Figure 3: Choose Destination Location

### 3. Prepare Driver Files Needed for Installation

When the following interface is shown, please click “**Next**” to move on to the next step.

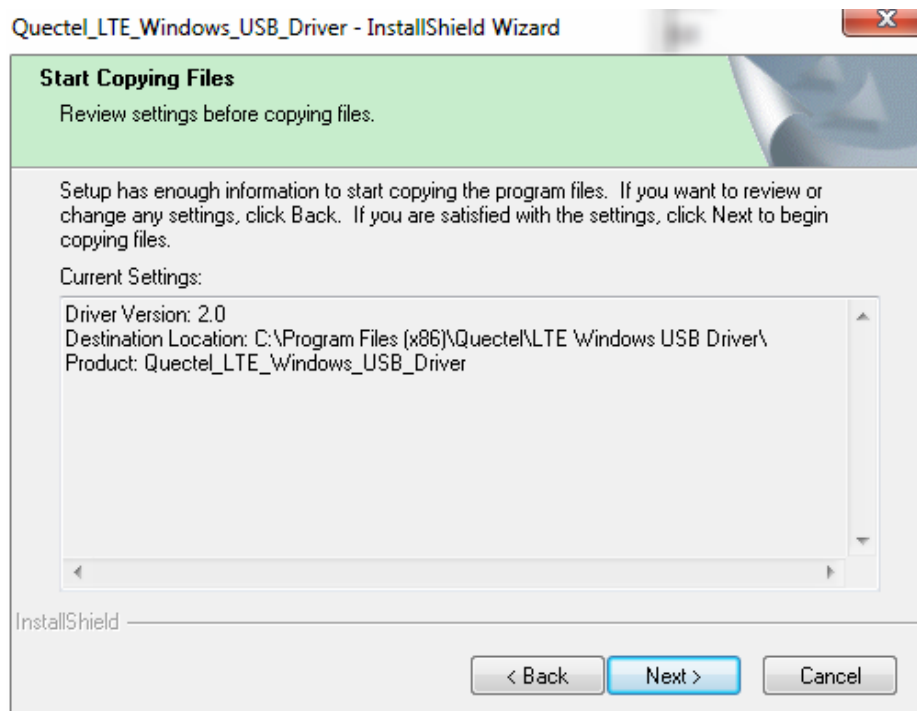


Figure 4: Copying Files

#### 4. Automatic Installation

It may take some time to install the driver, please wait patiently for the process to complete.

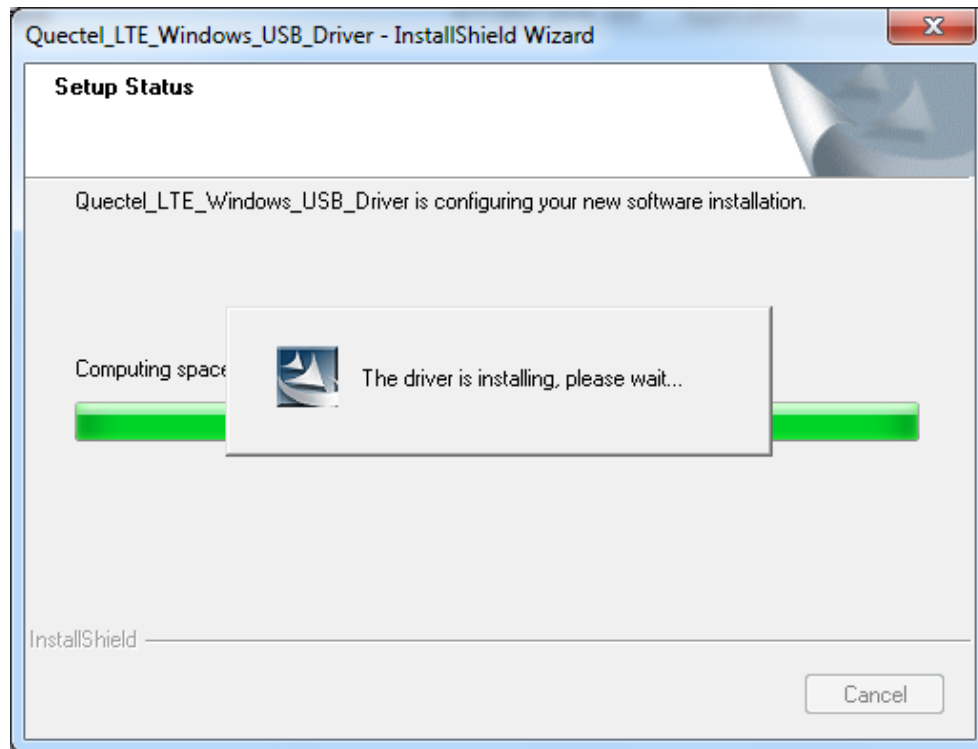


Figure 5: Automatic Installation

#### 5. Complete Installation

When the following interface is shown, it indicates the driver has been installed successfully. Click **"Finish"** to complete the installation.

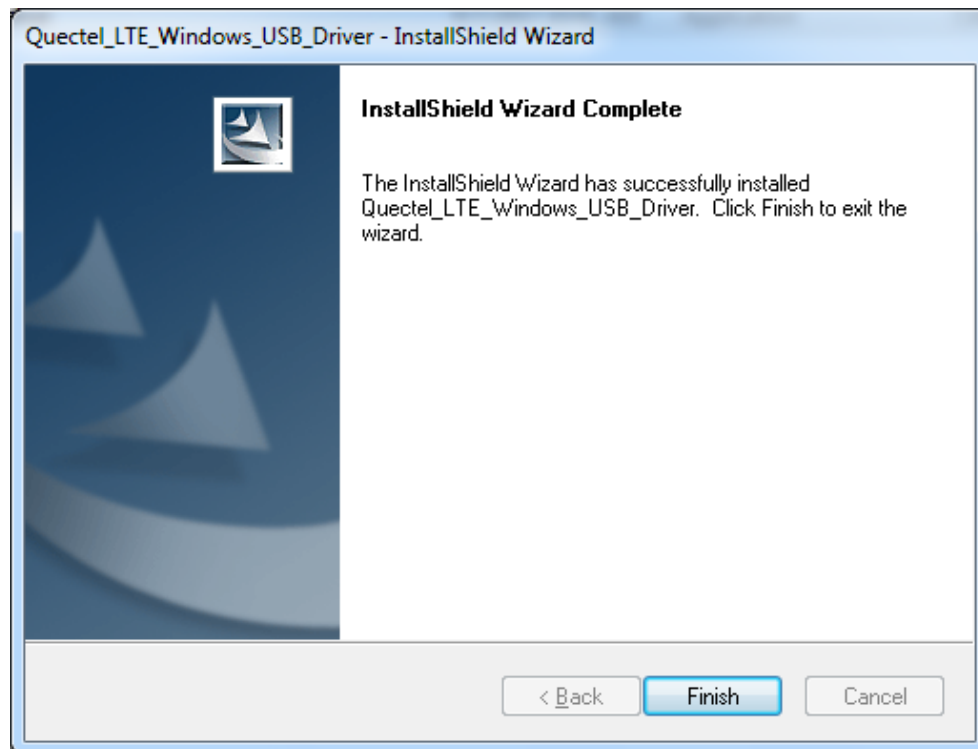


Figure 6: Complete Installation

After successful installation, customers can check the installation result through “Computer Management” → “Device Manager”.

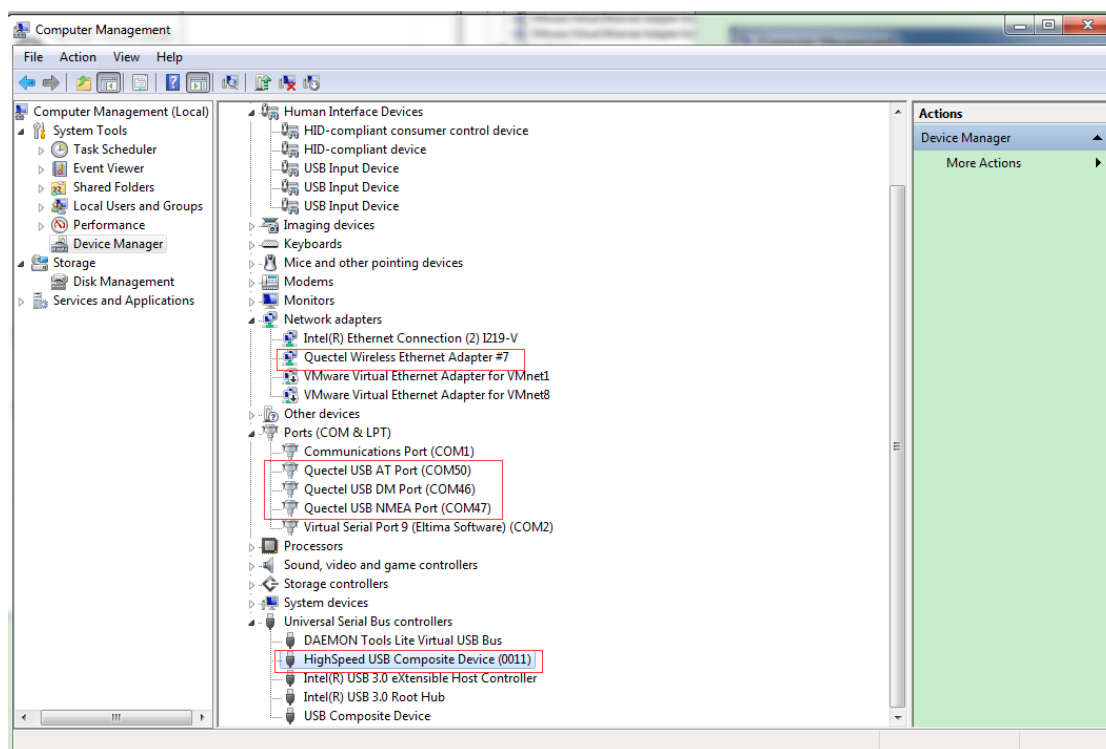


Figure 7: Check USB Driver Installation Result

## 2.3. Test

After the USB driver has been installed, customers can test whether the driver can work normally or not by QNavigator. For detailed steps, please refer to *Quectel\_QNavigator\_User\_Guide*.

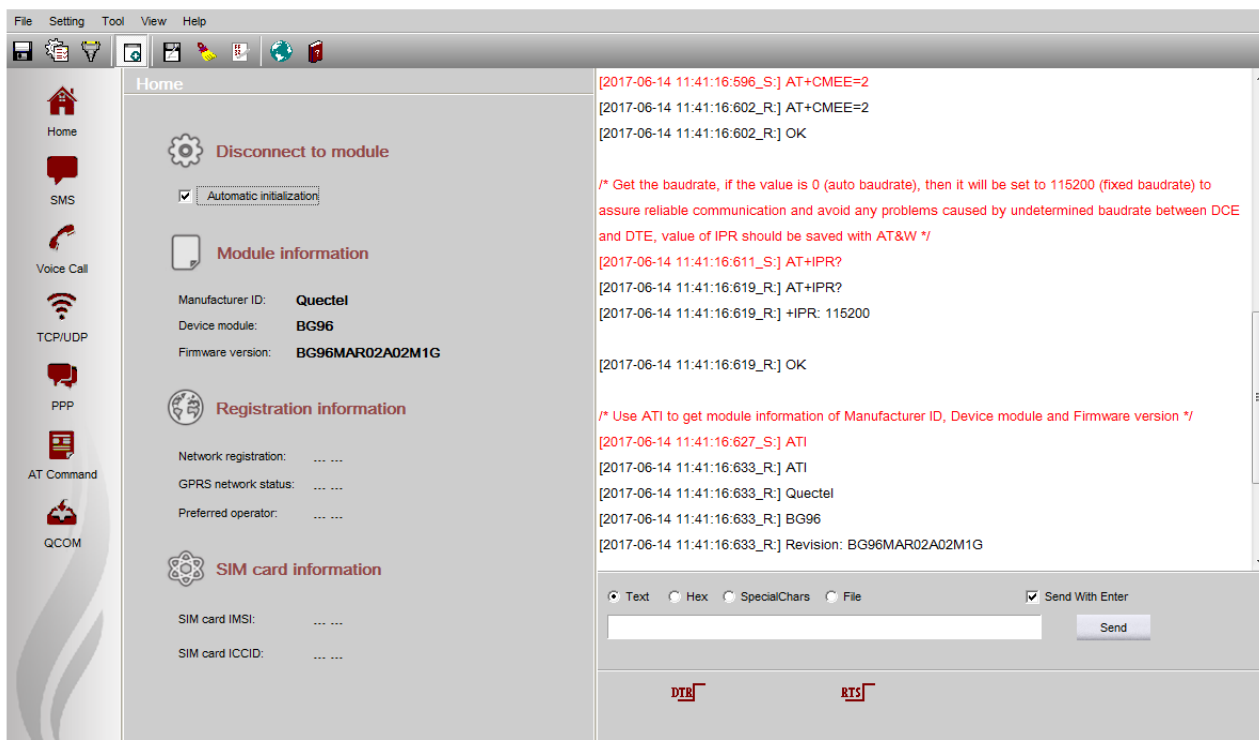


Figure 8: Module Testing via QNavigator (Take BG96 as an Example)

# 3 Uninstallation of USB Driver

This chapter mainly provides the way to uninstall USB driver for Quectel LTE modules. The uninstallation can be realized by re-operating installation package or adding/deleting program on “Control Panel”. By taking as an example, this document introduces using the latter method to uninstall the USB driver.

## 3.1. Uninstallation Procedures

### 1. Choose the Driver

Enter “Control Panel” and choose the installed driver, then click “**Uninstall**”, as shown below.

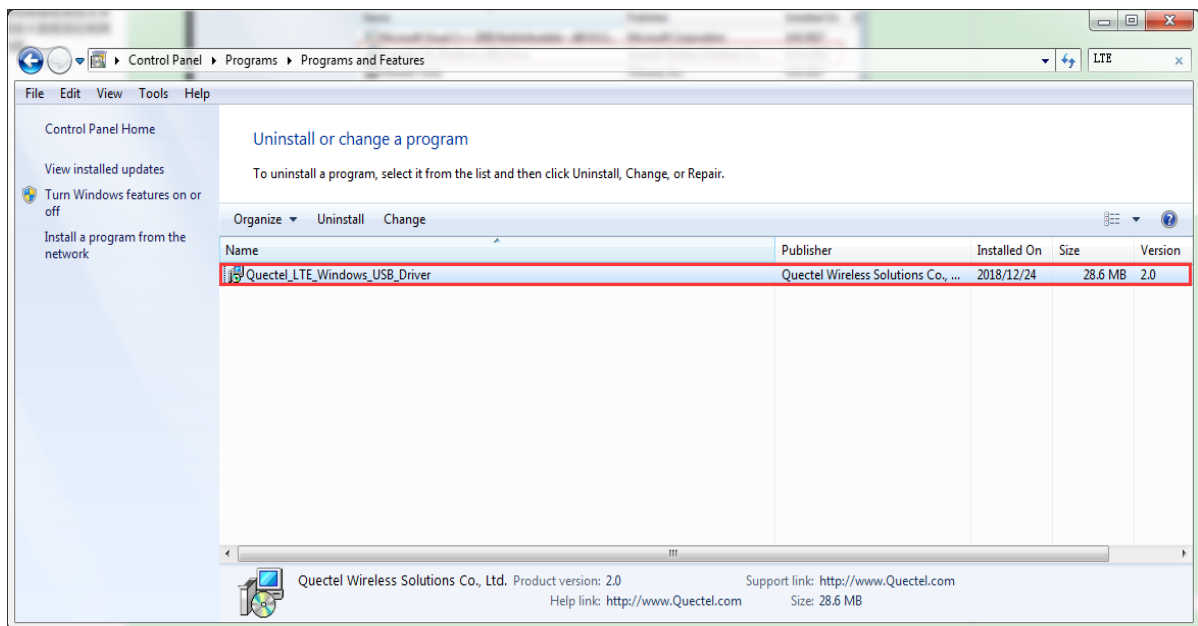


Figure 9: Choose the Installed USB Driver

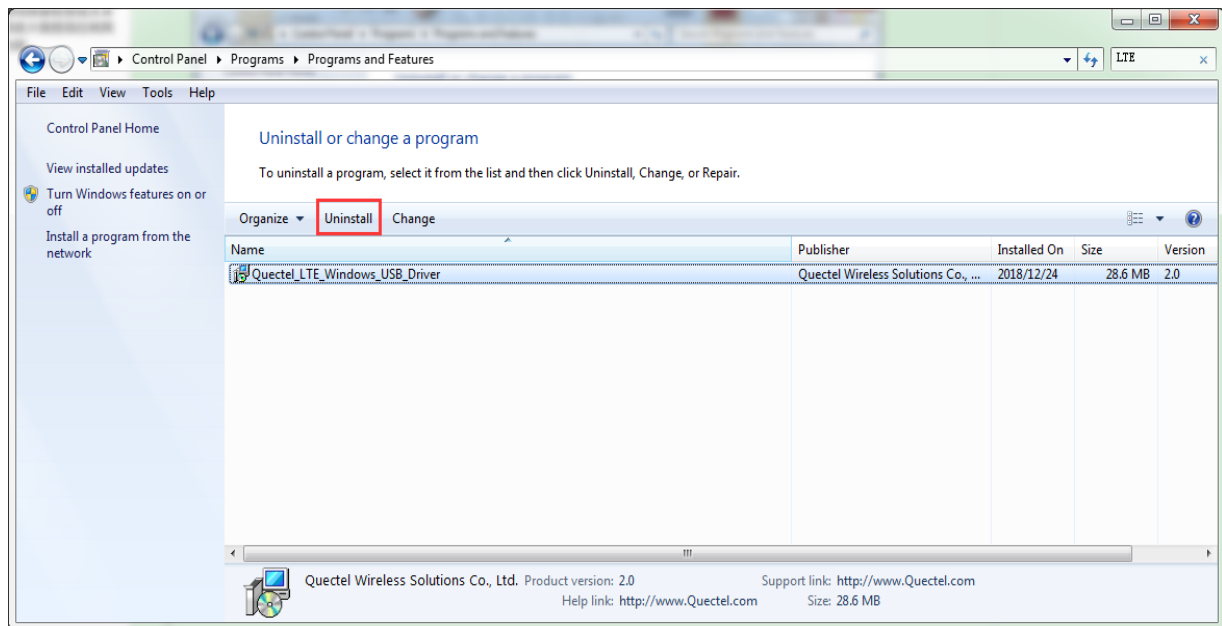


Figure 10: Uninstall the USB Driver

## 2. Check Uninstallation Setting

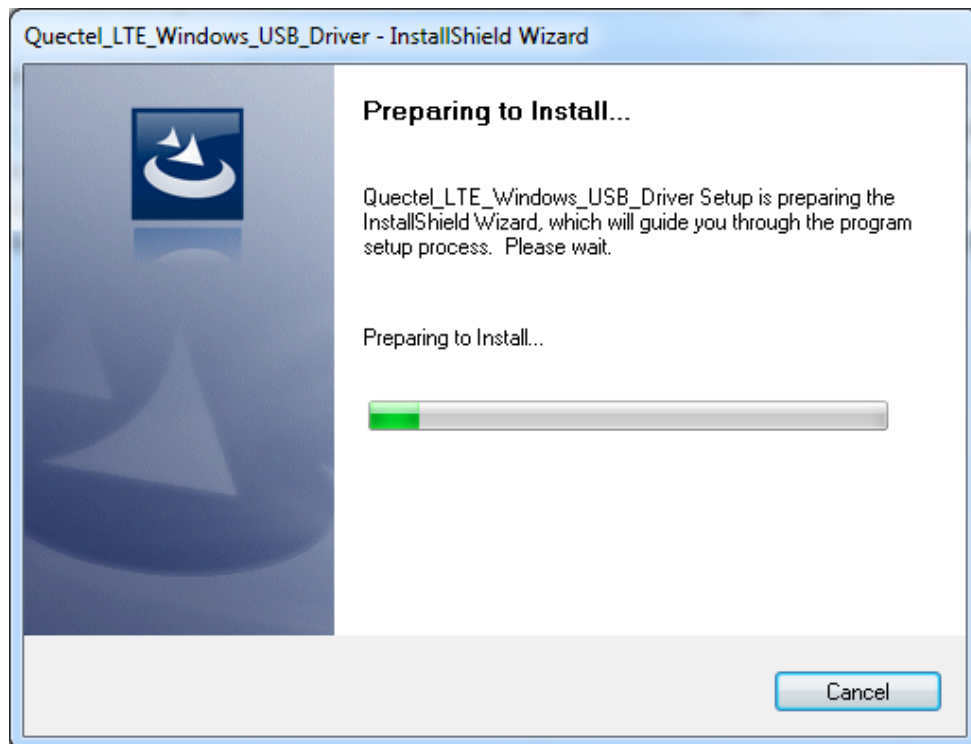


Figure 11: Check Uninstallation Setting

### 3. Confirm Uninstallation

Click “Yes” to confirm the uninstallation.

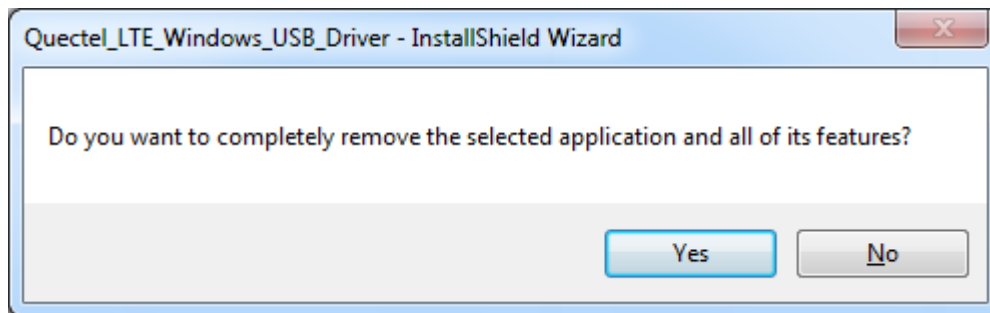


Figure 12: Confirm Uninstallation

### 4. Automatic Uninstallation

It may take some time to uninstall, please wait patiently for the process to complete.

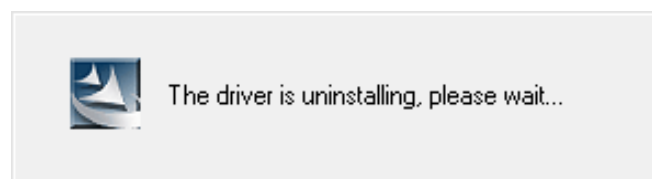


Figure 13: Automatic Uninstallation

Also please wait patiently during the installation files removing process as illustrated below.

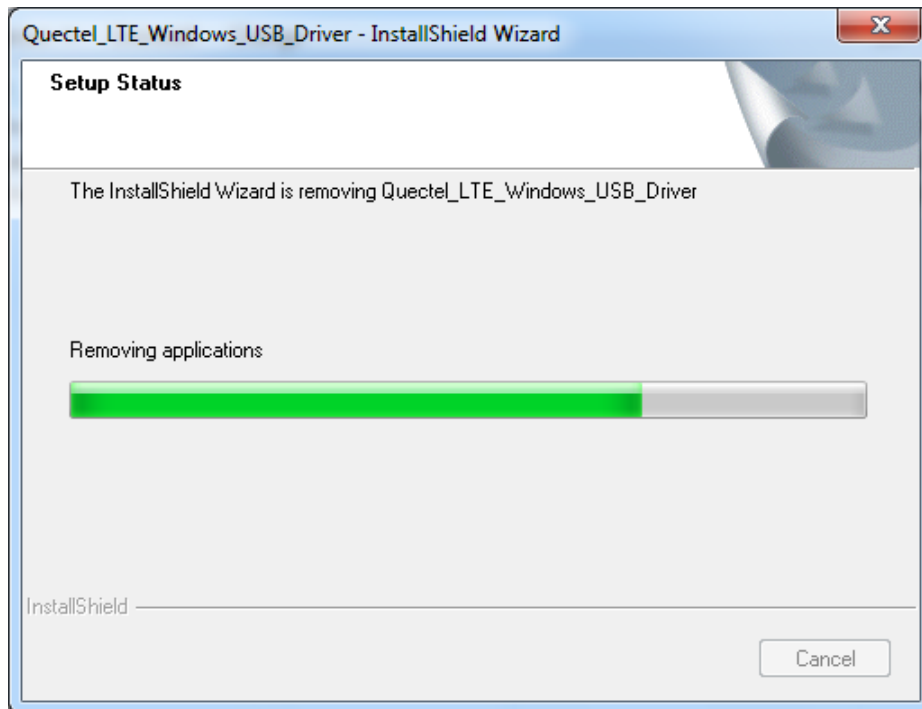


Figure 14: Removing Files

## 5. Complete Uninstallation

When the following interface is shown, it indicates the driver has been uninstalled successfully. Click **“Finish”** to complete uninstallation.

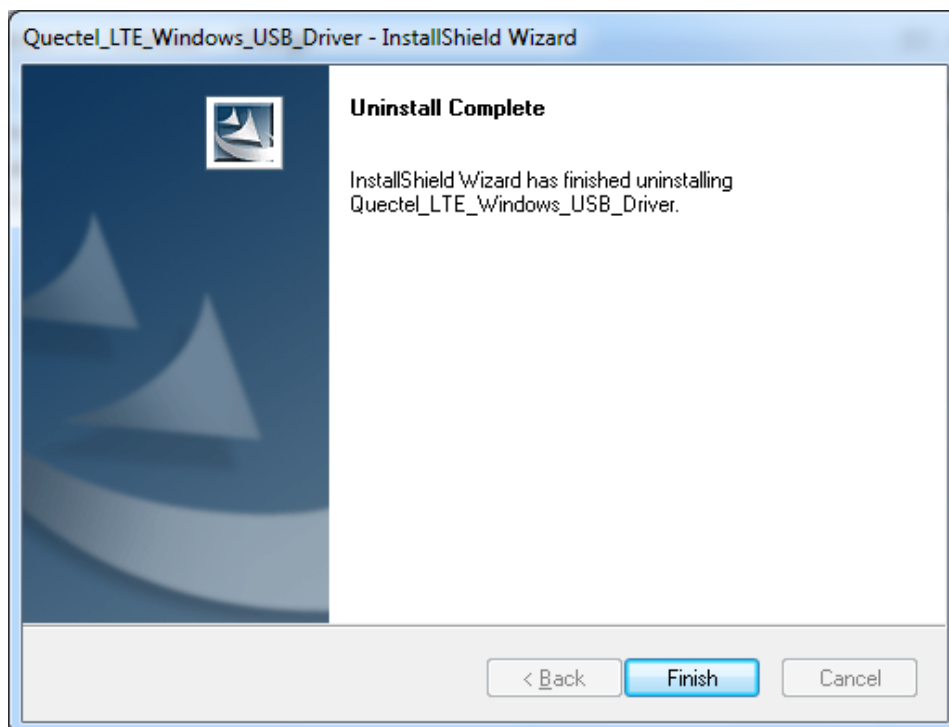


Figure 15: Complete Uninstallation



## 6. Check Uninstallation Result

After the USB driver has been uninstalled successfully, the device will switch to uninstalled status. Customers can check whether the driver has been uninstalled successfully or not through “Computer Management”, as illustrated below.

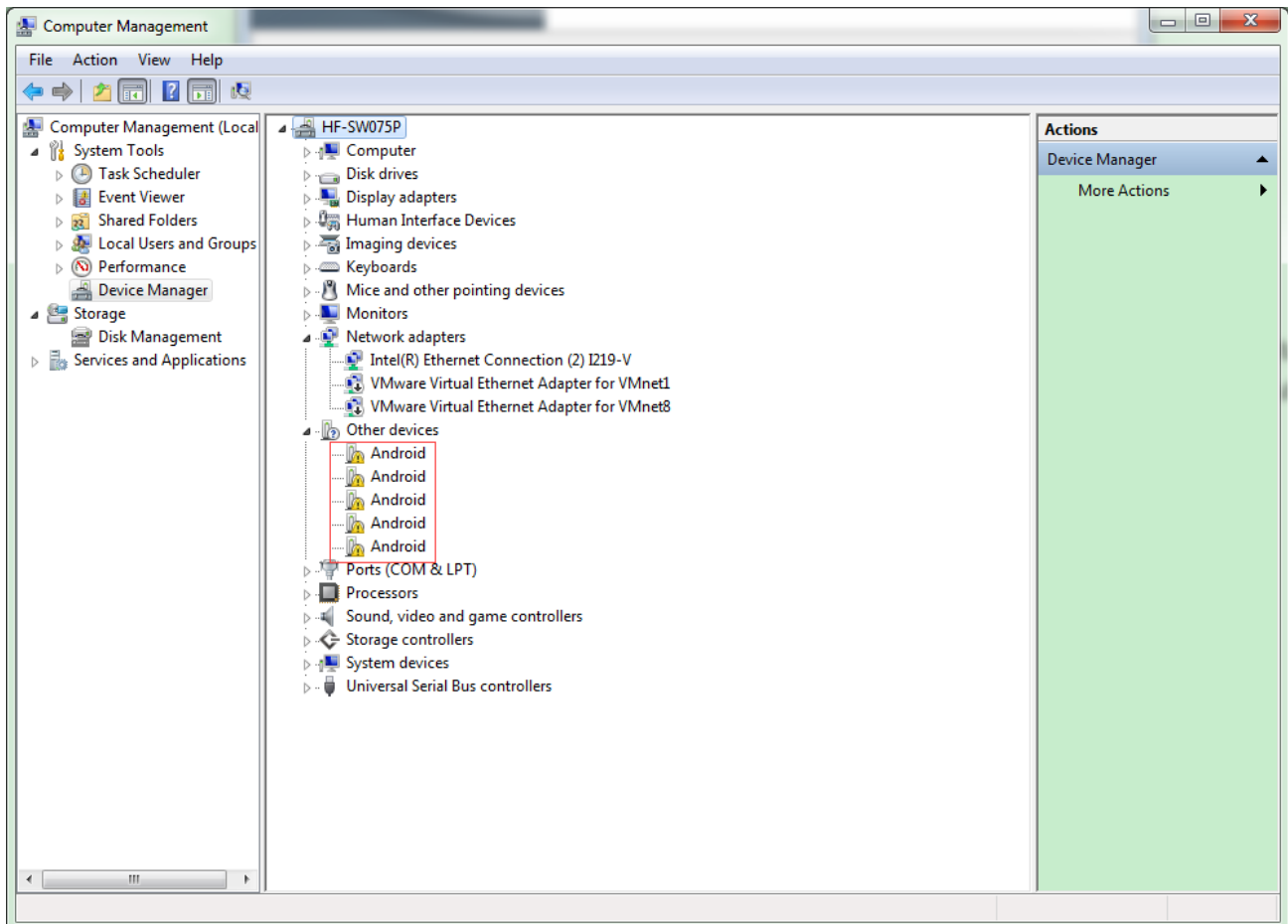


Figure 16: Check USB Driver Uninstallation Result